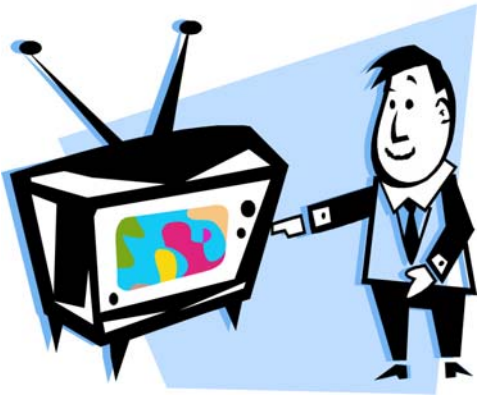


CLASSIC TV FAMILIES

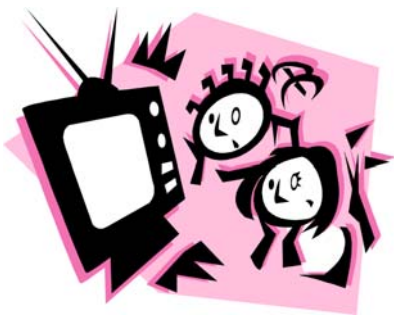


During the “golden age” of television in the 1950s and 1960s, the adventures and misadventures of families were a mainstay. Can you match the names of some of these beloved families with their TV shows? (Answers at bottom of this sheet.)

ANDERSONS
BRADLEYS
CLAMPETTS
CLEAVERS
KRAMDENS
McCAINS
MILLERS
NELSONS
PETRIES
RICARDOS
ROBINSONS
STEPHENS
STONES
TAYLORS
WILLIAMS



The Andy Griffith Show
The Beverly Hillbillies
Bewitched
The Danny Thomas Show
The Dick Van Dyke Show
The Donna Reed Show
Father Knows Best
The Honeymooners
I Love Lucy
Lassie
Leave It to Beaver
Lost In Space
Ozzie and Harriet
Petticoat Junction
The Rifleman



Answers to “Classic TV Families”: ANDERSONS = *Father Knows Best*; BRADLEYS = *Petticoat Junction*; CLAMPETTS = *Beverly Hillbillies*; CLEAVERS = *Leave It to Beaver*; KRAMDENS = *The Honeymooners*; McCAINS = *The Rifleman*; MILLERS = *Lassie*; NELSONS = *Ozzie and Harriet*; PETRIES = *The Dick Van Dyke Show*; RICARDOS = *I Love Lucy*; ROBINSONS = *Lost In Space*; STEPHENS = *Bewitched*; STONES = *The Donna Reed Show*; TAYLORS = *The Andy Griffith Show*; WILLIAMS = *The Danny Thomas Show*